



**Lighter
Stronger
Better!**

A: 29 Snook St Clontarf QLD 4019
A: PO Box 122 Margate QLD 4019
P: 07 3897 5700
F: 07 3811 6480
E: info@ecb.com.au
W: ecb.com.au
W: customalloy.com.au



8M41SY / NB6M41SY / NBM41SY

REPLACES: 03.07.10
REVISED: 09.03.21

FITTING INSTRUCTIONS

**TRITON 07/06-08/09 GLX, GLX-R, GLS, 09/09-12/14 ALL MODELS
TYPE 8, 63mm SERIES 2 NUDGE BAR and 76mm NUDGE BAR
VEHICLE FRONTAL PROTECTION SYSTEM (VFPS)
FOR AIR BAG & ADR COMPLIANT VEHICLES**

Ensure these instructions are left with the vehicle owner and/or operator.

Check installation hardware before commencing.

1. Attach Steel Mounting Bracket (supplied) to Driver's side using two M10 x 1.25 x 30mm bolts with flat and spring washers (supplied). **TIGHTEN BOLTS. See figure 1.**
2. Attach Steel Mounting Bracket (supplied) to Passenger Side using one M10 x 1.25mm x 30mm bolts with flat and spring washers (supplied) and one 3/8 x 1 1/2 bolt, nut, flat and spring washers (supplied). **TIGHTEN BOLTS. See figure 2.**
3. Position protection bar on outside of steel mounting brackets using two 3/8 x 1 1/2 bolts with washer on wire (supplied) for front holes. Use 3/8 x 1 1/2 bolts, nuts, flat and spring washers (supplied) for rear holes. **FINGER TIGHTEN ONLY.**
4. Align protection bar with vehicle. **See figures 3, 5 and 7 for front views and figures 4, 6 and 8 for side views TIGHTEN ALL BOLTS AND NUTS.**

ENSURE NUMBER PLATE IS CLEARLY VISABLE

Note: When fitting/refitting the licence plate to the vehicle, ensure there is no obstruction to licence plate vision in accordance with local authorities. If required relocate licence plate to an alternate location.

Further VFPS Notes:

- a) Do not attach VFPS to the vehicle using anchorages not intended for this purpose (e.g. engine mounting bolts).
- b) Do not use this product for any vehicle make or model, other than those specified by the VFPS manufacturer.
- c) Do not remove the plaque or label from the VFPS.
- d) Do not modify the structure of the VFPS in any way.
- e) No accessory or fitment should project forward of the VFPS forward profile.
- f) **ENSURE THESE INSTRUCTIONS ARE LEFT WITH VEHICLE OWNER AND/OR OPERATOR.**

IMPORTANT INFORMATION

Periodically check bolts and nuts for correct tightness, especially if travelling on rough roads

FITTING KIT

2 – Steel Mounting Brackets	11 – 10mm Flat Washers
3 – M10 x 1.25mm x 30mm bolts	8 – 10mm Spring Washers
3 – 3/8 x 1 1/2 bolts	5 – 3/8 nuts
2 – 3/8 x 1 1/2 bolts and washer on 200mm wire	

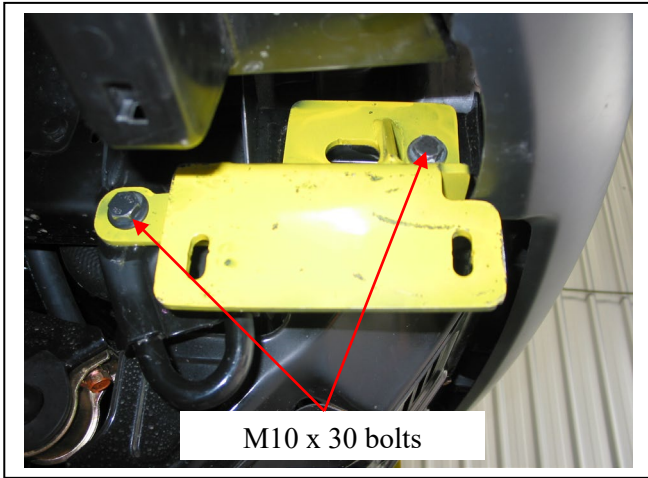


Figure 1 – Driver's side shown

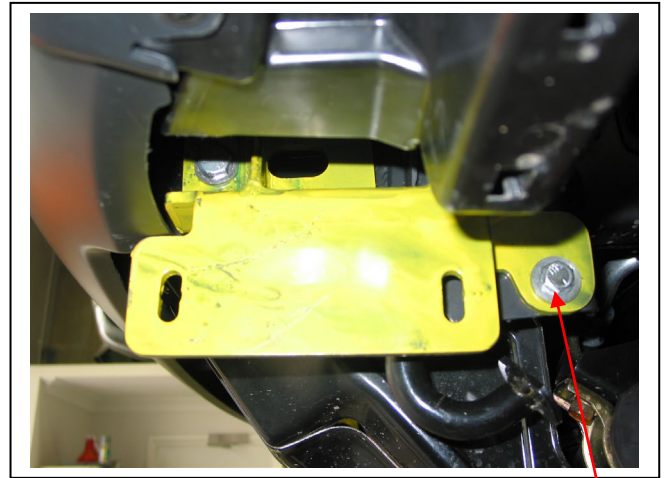


Figure 2 – Passenger side shown 3/8 x 1 1/2 bolt, nut and washers



Figure 3 – Type 8 Front view shown



Figure 4 – Type 8 side view shown



Figure 5 – 63mm Series 2 Nudge Bar Front view shown



Figure 6 – 63mm Series 2 Nudge Bar side view shown



Figure 7 – 76mm Nudge Bar Front view shown



Figure 8 – 76mm Nudge Bar side view shown



**Lighter
Stronger
Better!**

A: 29 Snook St Clontarf QLD 4019
A: PO Box 122 Margate QLD 4019
P: 07 3897 5700
F: 07 3811 6480
E: info@ecb.com.au
W: ecb.com.au
W: customalloy.com.au



Thank you for purchasing an ECB Product

Please ensure that you read the below and complete the warranty registration.

Vehicle Owner / Operator Responsibilities and Product Care

Important Information

It is the responsibility of the vehicle owner and operator to ensure all nuts and bolts are checked periodically, especially when travelling on corrugated roads. Please ensure these are tightened as per the steps in the provided fitting instructions.

While ECB products are manufactured from high tensile alloy the vehicle owner / operator must check any steel mounting brackets or steel auxiliary parts for signs of corrosion. If you find any corrosion, please contact ECB Pty Ltd to discuss an appropriate solution – 1800 069 145 or www.ecb.com.au.

Product Care

Polished Products

Being a premium mirror polished finish, regular maintenance will be required to keep that iconic ECB shine. We recommend using our own brand of Aluminium Polish. This formula has been tried and tested and in our opinion is the world's best standard.

Directions: Apply a small quantity of Aluminium Polish to a clean soft cloth and rub the metal surface. The longer the rubbing the brighter the surface becomes. Wipe off Aluminium Polish with clean soft cloth. Also suitable for motorised buffing machines. Note: There are more specific details on the polish bottle. Please read before use.

Powder Coated Products

Our powder coated finishes are very low maintenance. In fact, there is actually very little you will ever need to do for this product. Just clean it as you would your car and it will stay looking good as new.

ECB Aluminium Polish

When you're looking for that showroom finish look for your polished automotive products, you can depend on the no compromise quality of East Coast Bullbars Aluminium Polish. This specifically designed product is the best polish available and we guarantee that this \$#!+ works. Within our decades of manufacturing polished alloy products, we have trialled a large range of different polishes on the market and believe without a doubt that nothing beats the finish quality of East Coast Bullbars Aluminium Polish.

East Coast Bullbars Aluminium Polish is excellent for use by hand and is ideal for polished bullbars, nudge bar and stainless-steel products. This polish will clean, polish and protect your product from the elements whilst bringing your products back to that showroom finish look.





**Lighter
Stronger
Better!**

A: 29 Snook St Clontarf QLD 4019
 A: PO Box 122 Margate QLD 4019
 P: 07 3897 5700
 F: 07 3811 6480
 E: info@ecb.com.au
 W: ecb.com.au
 W: customalloy.com.au



Warranty Registration

Please Register your purchase online www.ecb.com.au/warranty-registration
 If you have any questions, please contact our national office on 1800 069 145 or www.ecb.com.au

Or post the below information back to ECB, PO Box 122, Margate, QLD 4019.

Contact Details

Name:	
Address:	
Email:	
Phone:	

Purchase Details

Purchased from:	
Date of Purchase:	

Product Details

(You can find this information on the silver label of your ECB Product)

Part Number:	8M41SY, NB6M41SY, NBM41SY (Please circle)
Work Order Number:	

By submitting this registration, you automatically subscribe to ECB's mail outs. You can unsubscribe at any time.



**Lighter
Stronger
Better!**

A: 29 Snook St Clontarf QLD 4019
 A: PO Box 122 Margate QLD 4019
 P: 07 3897 5700
 F: 07 3811 6480
 E: info@ecb.com.au
 W: ecb.com.au
 W: customalloy.com.au



We value your comments

Dear Fitter,

ECB would like to know how you went with the installation of this product. We value your comment and may need to contact you to clarify some details so please complete your contact details clearly.

We would appreciate if you could complete as many of the following details as possible.

Your Name:	Your contact No.
Product Part No.	Product Invoice No.
Product Description:	Make, model, and year of vehicle:
Product Work Order No.	Company your from/Company product purchased from:

Date of Fitment: ____/____/____

Was the fitting hardware supplied complete? Yes No

If no what was not supplied

Did the installation go well? Yes No

Please provide comments

Please draw diagrams if you need to.

Post to
 Reply Paid 122
 PO Box 122
 Margate QLD 4019

Fax to
 (07) 3283 1168



**Lighter
Stronger
Better!**

A: 29 Snook St Clontarf QLD 4019
A: PO Box 122 Margate QLD 4019
P: 07 3897 5700
F: 07 3811 6480
E: info@ecb.com.au
W: ecb.com.au
W: customalloy.com.au



DESPATCH CHECKLIST

8M41SY / NB6M41SY / NBM41SY

Work Order #	
Finish:	
Transport:	
Due Date:	

- 2 – Steel mounting brackets.
- 1 – Bolt Kit.

**See other side of
this page for
photos of all
mounts**



Is this product “the best it can be” Yes _____ / _____
Wrapper's initials / Checker initials
 If **NO** fix before continuing

All parts checked and completed by:

Nut and bolts: _____ Date ___ / ___ / ___

Order control: _____ Date ___ / ___ / ___

Final wrap check: _____ Date ___ / ___ / ___



**Lighter
Stronger
Better!**

A: 29 Snook St Clontarf QLD 4019
A: PO Box 122 Margate QLD 4019
P: 07 3897 5700
F: 07 3811 6480
E: info@ecb.com.au
W: ecb.com.au
W: customalloy.com.au

